

Scale Pattern Variation

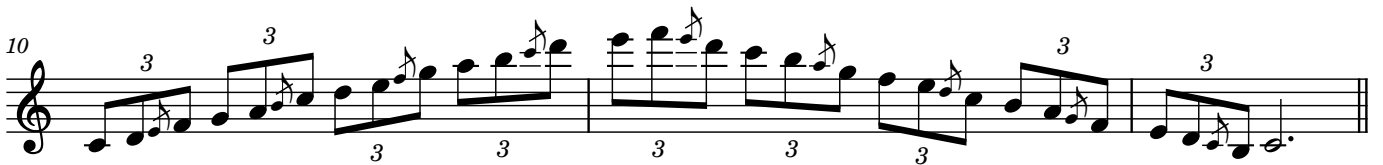
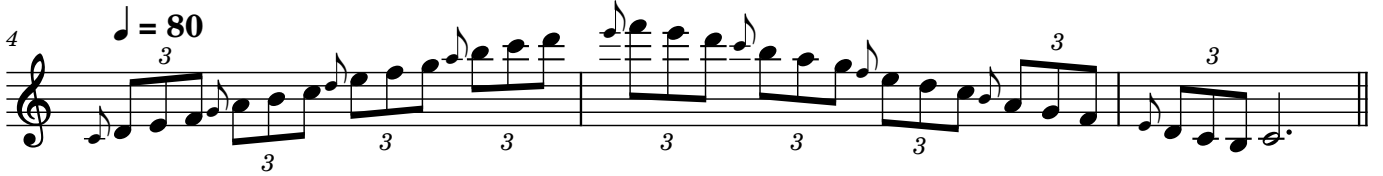
Broken Rhythms in Major

*Make note of the slashed and regular grace notes.
It is essential to play the slashed grace notes before
the beat to effectively utilize these variations.

Joshua Mlodzianowski

C Major

$\text{♩} = 120$



37

40

43

46

49

52

73

76

79

82

85

88

109

112

115

118

121

124

8 E Major

*Make note of the slashed and regular grace notes. It is essential to play the slashed grace notes before the to effectively utilize these variations.

127

130

133

136

139

142

145

148

151

154

157

160

10 B Major

163

166

169

172

175

178

12 F# Major

199



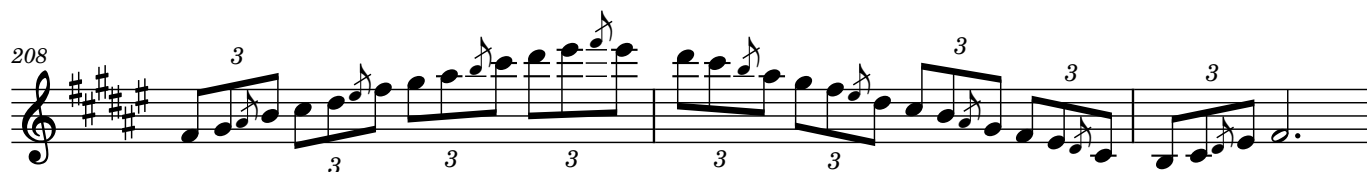
202



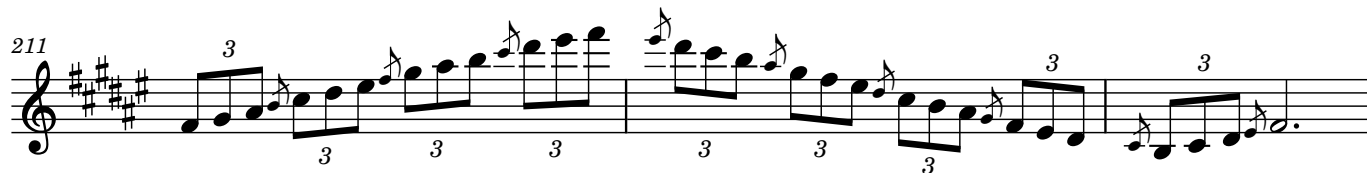
205



208



211



214

